

INSTONE Lightweight 747 Cattle Penning System



Instone Cattle Pen Internal Dimensions

Height 160cm

Width 224cm

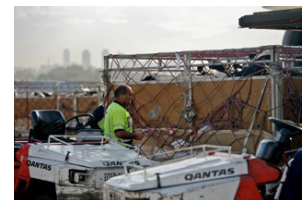
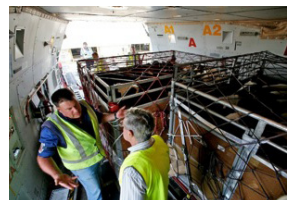
Length 298cm

Internal Useable Area 6.67m²



KEY BENEFITS

- ✈ Lighter
- ✈ Stronger & safer than disposable pens
- ✈ Larger Internal Useable Area than disposable pens
- ✈ Environmentally Responsible



Instone Cattle Pen Weight

Parts	Weight (KG)
Empty Pen	103
Celotex	20
Hardware	5
Plastic/Tar Paper	10
Straps	12
Wood Chips	9
Pallett	100
Cargo Net	27
Total Dressed (Ready To Load)	283

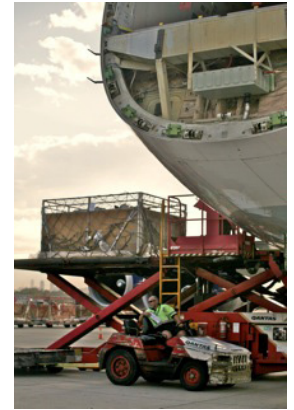
Weight based on pen being dry. Weight will increase in the instance of rain or snow.



The Instone Lightweight 747 Cattle Penning System offers a significantly increased useable area (6.67m²) compared with disposable wooden cattle pens, allowing exporters to maximise the number of cattle they can load on a single shipment, while fully complying with AQIS recommendations and industry standards.

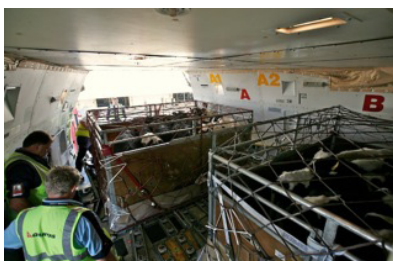


It is the livestock exporters responsibility to check with AQIS their individual circumstances and the table below is intended as a guide only, however it highlights the significant benefits of the Instone Lightweight 747 Cattle Penning System.



Stocking Density

Average Weight (KG)	Number of Cattle Main Deck	Number of Cattle Lower Belly Hold
200 - 220	10	9
250 - 270	9	8
300 - 320	8	7
350 - 370	7	6
400 - 420	6	5
450 - 470	6	5
500 - 520	5	4
550 - 570	5	4
600 - 620	4	3
650	4	3



Contact	Chris Pearson
M	+61 412 202 320
O	+61 2 4872 3888
E	chris@instoneasia.com